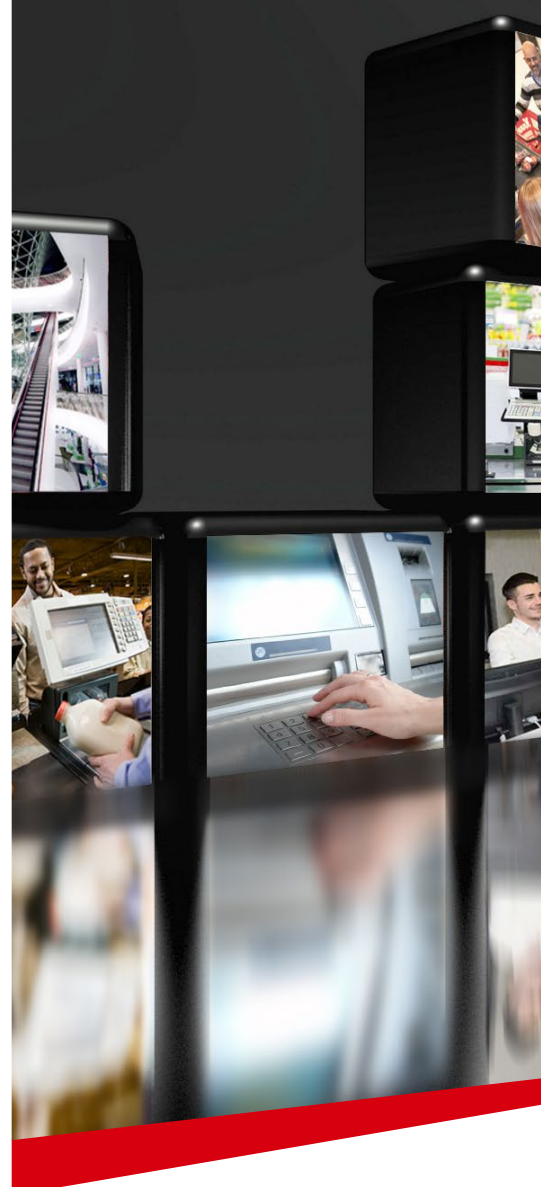




**HIKVISION**  
**VERTICAL SOLUTIONS &**  
**PRODUCTS GUIDE**  
 COMPLETE SOLUTIONS  
 FOR EVERY APPLICATION



Distributed by



**HIKVISION**

**Headquarters**

No.555 Qianmo Road, Binjiang District,  
 Hangzhou 310051, China  
 T +86-571-8807-5998  
[overseasbusiness@hikvision.com](mailto:overseasbusiness@hikvision.com)

**Hikvision USA**  
 T +1-909-895-0400  
[sales.usa@hikvision.com](mailto:sales.usa@hikvision.com)

**Hikvision Italy**  
 T +39-0438-6902  
[info.it@hikvision.com](mailto:info.it@hikvision.com)

**Hikvision Singapore**  
 T +65-6684-4718  
[sg@hikvision.com](mailto:sg@hikvision.com)

**Hikvision Europe**  
 T +31-23-5542770  
[saleseuro@hikvision.com](mailto:saleseuro@hikvision.com)

**Hikvision France**  
 T +33(0)1-85-330-444  
[info.fr@hikvision.com](mailto:info.fr@hikvision.com)

**Hikvision Oceania**  
 T +61-2-8599-4233  
[salesau@hikvision.com](mailto:salesau@hikvision.com)

**Hikvision Middle East**  
 T +971-4-8816086  
[salesme@hikvision.com](mailto:salesme@hikvision.com)

**Hikvision Spain**  
 T +34-91-737-16-55  
[info.es@hikvision.com](mailto:info.es@hikvision.com)

**Hikvision Hong Kong**  
 T +852-2151-1761

**Hikvision Russia**  
 T +7-495-669-67-99  
[saleru@hikvision.com](mailto:saleru@hikvision.com)

**Hikvision Poland**  
 T +48-22-460-01-50  
[poland@hikvision.com](mailto:poland@hikvision.com)

**Hikvision Canada**  
 T +1-909-895-0400  
[sales.usa@hikvision.com](mailto:sales.usa@hikvision.com)

**Hikvision India**  
 T +91-22-28469900  
[sales@pramahikvision.com](mailto:sales@pramahikvision.com)

**Hikvision UK**  
 T +44-1628-9021-4  
[support.uk@hikvision.com](mailto:support.uk@hikvision.com)



**HIKVISION**

VERTICAL SOLUTIONS &  
PRODUCTS GUIDE

COMPLETE SOLUTIONS  
FOR EVERY APPLICATION



# About Us

---

Hikvision is the world's leading supplier of video surveillance products and solutions. Featuring the industry's strongest R&D capacity, Hikvision excels in providing complete and comprehensive vertical market security solutions. The company's complete product suite includes Smart IP cameras, HD analog cameras, speed domes, NVRs, DVRs, video management software, access control and alarm systems, encoders, decoders, and other elements of sophisticated security systems and CCTV technology for any security need. Working with our partners, we're winning ever-increasing recognition internationally, honing our advanced project customization abilities and professional services. Throughout the world, thousands of customers in every critical surveillance sector – cities, airports, banking, harbors and more – have chosen Hikvision's industry-leading solutions.



# Great Products , Great Partners

---

As the core of the corporate's business, Hikvision always focuses on the development of partnership. Through its complete product offerings which are already recognized worldwide and helpful knowledgeable customer support, the company can make sure all their existing and perspective partners and customers can grow together at the same pace.



# Hikvision Core Technology

---



Audio & Video Storage Technology



Video Analysis & Pattern Recognition Technology



Application-specific integrated circuit(ASIC) technology



Cloud Computing



Audio & Video Codec Technology



Embedded system development technology



Big Data Analysis Technology



Video Image Processing Technology



Streaming media network & control technology

# Smart City Surveillance Solution

---

With increasing threats to our communities, city-wide surveillance has never been more crucial. City managers and other civic authorities must be equipped to always stay a step ahead of dangers. Hikvision's Smart City Solution pulls together our full line of Smart 2.0 surveillance products, offering a wide range of application. This intelligent solution enables quick data search through massive amounts of video and performs real-time analyses, recognizing threats and implementing prevention measures. In short, our Smart City Solution safeguards the social and economic life of your city so citizens will be confident to go about their normal lives in peace. The World Expo in Shanghai, China, 2010 for example, was protected by the Smart City Surveillance Solution.

Today, Hikvision's Smart City Surveillance Solution is securing the City of Philadelphia's Recreation Centers in Pennsylvania, USA, the London Borough of Hammersmith and Fulham in the United Kingdom, The Republic of South Korea in its entirety, and many more locations around the world.



Philadelphia Recreation  
Centers, USA

# Smart Mobile Solution

---

From accident response to guarding against threats, transportation security is more critical now than ever before. More complex transportation hubs with increased passenger loads require central management systems that protect citizens. Hikvision's Smart Transportation Solution provides powerful, comprehensive surveillance for every vehicular security need. Featuring analog, HDTVI, and IP cameras to record HD video, embedded mobile NVRs & DVRs, 3G & 4G wireless bases, crucial information is tracked vigilantly. Key GPS and alarm data transmits in real time. The iVMS-5200 Professional Video Management Platform manages devices centrally, providing functions like Live View, Remote Playback, GPS Locator, and Route Playback.

Today, Hikvision's Smart Transportation Solution is securing the School Buses of Dubai-Sharjah-Ajman's National Charity School, Belo Horizonte BRT MOVE Bus Station in Brazil, Frankfurt's Light Rail Stations in Germany, and many more locations around the world.



School buses  
Dubai



# Smart Traffic Solution

---

Modern transportation systems have made interacting with others easier than ever. As a result, there are more roads, more cars, and of course, more traffic. Traffic management has become a critical element of keeping travelers safe and vehicles moving. Hikvision is committed to providing complete, innovative solutions for intelligent transportation systems (ITS). One of the latest solutions from Hikvision, the Smart Traffic Solution, includes dedicated high-performance cameras and reliable embedded video terminals for event recording. A centralized video management platform unifies ITS devices and delivers service-extensible applications such as payment management, access control, target filtering, and more.

Today, Hikvision's Smart Traffic Solution is securing the Sea Point Highway of Cape Town in South Africa, Shenzhen Bao'an International Airport in China, the Container Depot in Antwerp, Belgium, and many more locations around the world.



Sea Point Highway  
Cape Town, South Africa

# Smart Banking Solution

---

In the security industry, financial institutions – from banks to treasuries to ATM machines – are the most critical to safeguard. Threats come from inside and out. We take this kind of protection as seriously as you do. We are Hikvision, worldwide industry leader in security and surveillance technology, and we recognize the unique challenges of creating a safe and secure banking environment. Our Smart Banking Solution System integrates facilities into a centralized monitoring solution that is easy to install, manage, and integrate. Our advanced technology protects customers, personnel, and assets around the world.

Today, Hikvision's Smart Banking Solution is securing Ziraat Banks in Turkey, the State Banks of India (SBI), BMCE Banks in Morocco, China's Merchant Banks, and many more locations around the world.



Ziraat Bank  
Turkey

# Smart Retail Solution

---

In many respects, shopping malls are a metaphor for entire economies: a combination of infrastructure and individuals, designed for exchanging goods and services. Defining elements of this micro-economy are customer traffic flow and the retail spaces serving these customers. Nowadays, while not as immediately noticeable, security systems have become an equally indispensable part of this environment. With the increase in size and scale of malls around the world, professional security systems are now tasked not only to provide security, but also enhance economic efficiency and productivity. Hikvision's Smart Retail Solutions effectively accomplishes these critical roles – and much more.

Today, Hikvision's Smart Retail Solution is securing McDonald's Restaurants in Malaysia, Al Fitaihi Group in Saudi Arabia, Mac's Convenience Stores across Canada, the Chow Tai Fook Jewelry Shop in China, and many more locations around the world.



McDonald's  
Malaysia

# Smart Hotel Solution

---

Hikvision’s Smart Solution for Hotels is a complete IP surveillance system for comprehensive, powerful security. This total solution provides around-the-clock protection with industry-leading, low-light technology, automated vehicle access control via Hikvision’s automatic number plate recognition (ANPR) module, and automatic event alerts with Hikvision’s Smart detection. Hikvision’s Smart Hotel Solution features integrated IP products – including IP cameras, NVRs, and video management software – creating a reliable, flexible security platform to execute this critical application.

Today, Hikvision’s Smart Hotel Solution is securing the Sofitel Hotel in France, the Oroville Chinese Temple & Garden in the US, the Ruwi Hotel in Muscat, Oman, the Grosvenor House in Dubai, and many more locations around the world.



Hotel Intercontinental Doha  
West Bay, Qatar

# Smart Industrial Parks Solution

---

Hikvision's Smart Solution for Industrial Parks is total IP system that empowers your facility's productivity and parking security. This solution provides around-the-clock protection with industry-leading, low-light technology, automated vehicle access control via Hikvision's ANPR module, and automatic event alerts with Hikvision's Smart detection. Our Smart Industrial Park Solution features integrated IP products – including IP cameras, NVRs, and video management software – creating a reliable, flexible, and fully compatible security platform to execute this critical application.

Today, Hikvision's Smart Industrial Park Solution is securing the Forensic Services and Coroner's Complex in Canada, New York's Low-Income Housing Facilities in the US, the National Rehabilitation Center in Abu Dhabi, and many more locations around the world.



New York's Low-Income Housing Facilities  
US

# Smart Port and Maritime Solution

---

Port Security remains critical to the infrastructure of coastal and riverside cities worldwide. Up until now, traditional surveillance solutions came with dire limitations, such as inadequate range of coverage, low resolution imaging, and poor video analytics, among others. This vital enterprise is too important to employ any sub-standard security system – which is why Hikvision continually raises industry expectations for excellent surveillance solutions. Hikvision’s Smart Port Solution combines high definition, smart-VCA functionality along with specialty components that are precisely tailored to port surveillance – providing customers an advanced and complete end-to-end solution for the highest quality Port Security.

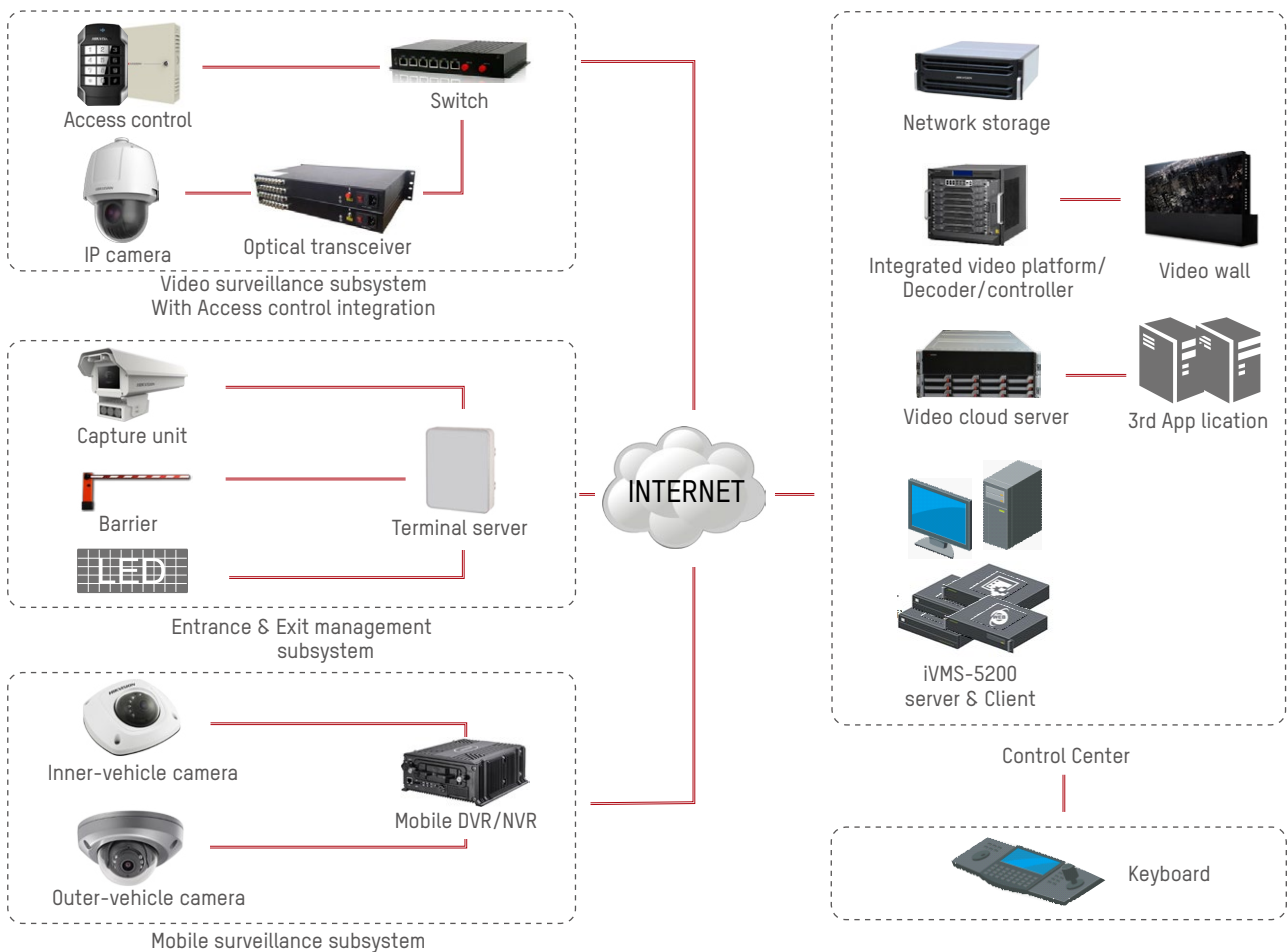
Today, Hikvision’s Smart Port Solution is securing the Dun Laoghaire Harbor in Dublin, Ireland, Hong Kong’s Kai Tak Cruise Terminal, the Qingdao Port in China, and many more locations around the world.



Dun Laoghaire Harbour  
Dublin, Ireland

# Hikvision

## Video Surveillance Based Total Solution Architecture



# Data Capturing Devices



## 03 VIDEO INTERCOM

## 02 ACCESS CONTROL

**i** Due to limitations of product authentication and language support, Hikvision's full line of products will not be available in some areas of the world. For details, please contact a Hikvision branch office or one of our authorized distributors.



# LOW-LIGHT DARKFIGHTER CAMERAS



With industry-leading, ultra-low-light technology, the DarkFighter Camera Series offers a host of smart functions that make colored images possible in dim environments. All DarkFighter Cameras feature Hikvision's SMART technologies, which combine intelligence, efficiency, and ease-of-use in modern video surveillance equipment.



Conventional camera



Conventional camera - 23x



DarkFighter camera



DarkFighter camera - 23x

**DARKFIGHTER**



## Key Features

- Ultra-low-light Performance
- Full HD 1080p, up to 60 fps
- 120 dB WDR
- Low-light HD Lens
- Full Smart feature set



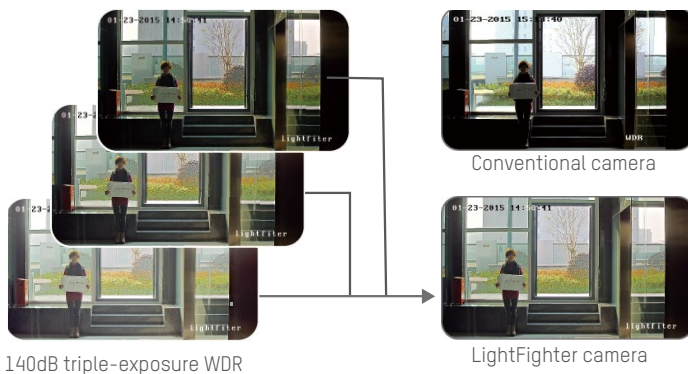
## Available Models

- DS-2CD4026FWD (-A)(P)
- DS-2CD4A26FWD-IZ(H)(S)
- DS-2CD4626FWD-IZ(H)(S)
- DS-2CD4526FWD-IZ(H)
- DS-2CD4126FWD-IZ
- DS-2DF6223-AEL

# WDR LIGHTFIGHTER CAMERAS



The LightFighter Camera line carries the technology needed to overcome even the most harshly lit environments – like direct, late-morning or afternoon sunlight. Engineered with an industry-leading 140 dB WDR ability, LightFighter cameras see through intense light to produce crystal-clear images with true color reproduction.



## Key Features

- High, 2 MP resolution
- Full HD 1080p images, up to 60 fps
- 140 dB WDR
- Full Smart feature set
- Up to 8–32mm Motorized Vari-focal Lens with Smart Focus
- Advanced low-light performance with up to 500 feet (150m) IR Arrays



## Available Models

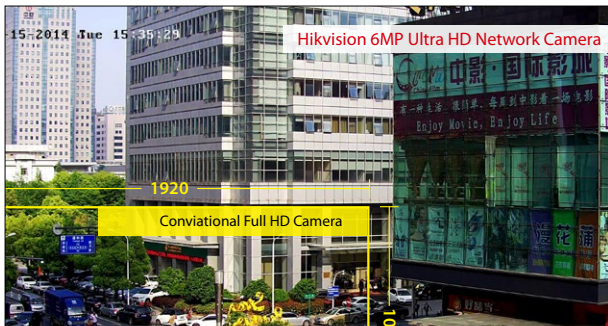
- DS-2CD4025FWD-(A)(P)
- DS-2CD4A25FWD-IZ(H)(S)
- DS-2CD4625FWD-IZ (H)(S)
- DS-2CD4525FWD-IZ (H)
- DS-2CD4125FWD-IZ
- DS-2DF6236V-AEL
- DS-2DF8236IV-AEL



# ULTRA HD PERFORMANCE 6MP CAMERAS



The 6 MP Ultra HD Camera Series provides a total resolution of 3072 x 2048 pixels at full frame rates, delivering spectacular images. With this expansive capability, one 6 MP camera covers the area that previously required several conventional cameras.



## Key Features

- 3072 x 2048 Maximum resolution
- Full Smart feature set
- HD Lens with consistent aperture
- Super DWDR



## Available Models

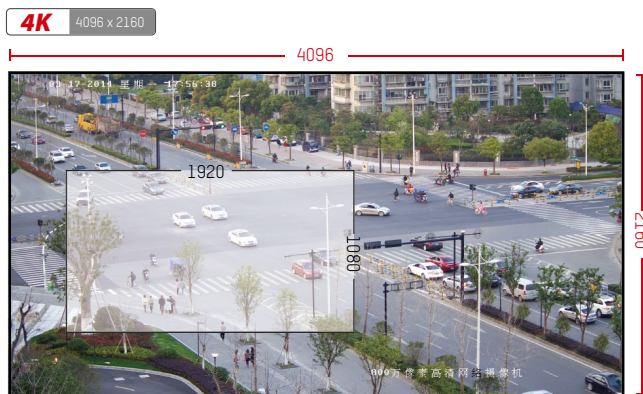
- DS-2CD4165F-IZ
- DS-2CD4565F-IZ (H)
- DS-2CD4A65F-IZ (H)
- DS-2CD4665F-IZ
- DS-2CD4065F-(A)(P) 6MP



# ULTRA HD PERFORMANCE 4K CAMERAS



By building a total system — complete with cameras, NVRs, etc., — Hikvision strives to provide a system that is more helpful and more useful to its customers. The Hikvision 4K system, which comes equipped with a variety of smart functions, satisfies the security industry's need for ultra-high resolution and smart surveillance.



## Key Features

- High, 4096 x 2160 resolution
- Full Smart feature set
- 2.8–12mm Motorized VF lens
- Up to 230 feet (70m) IR
- Audio / alarm IO



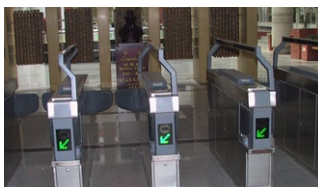
## Available Models

- DS-2CD4085FWD-AP
- DS-2CD4185FWD-IZ
- DS-2CD4585FWD-IZH
- DS-2CD4A85FWD-IZSH
- DS-2CD4685FWD-IZHS



# ATM SECURITY COVERT CAMERAS

Hikvision's Covert Camera is a versatile network camera characterized by its compact design and exceptional HD image quality, offering easy installation and welcomed flexibility – even in very limited spaces. It's right at home when used for any discreet, hidden-surveillance need, such as ATM machines, access control areas, luxury store, and many more.



Access control



Luxury stores

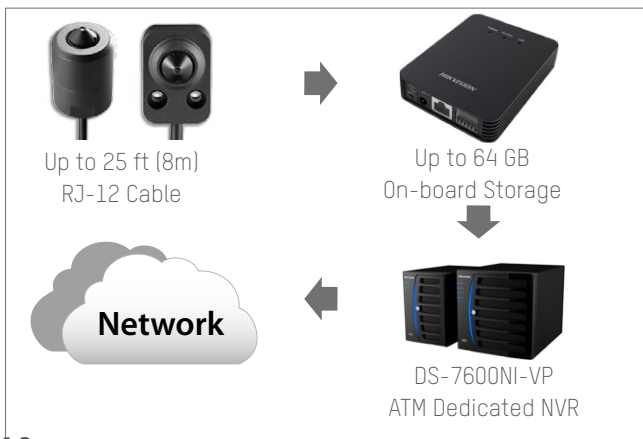


Cashier areas



## Key Features

- Dual lens support
- Extremely discreet design
- Region-of-interest Smart codec
- HD Resolution with true WDR
- Rotate mode
- On-board storage
- Multiple video streams



## Available Models

- DS-2CD6412FWD-10/20/30
- DS-2CD6412FWD-11/21/31

# TELLER/CORRIDOR/CORNER SECURITY MONOVU DUAL LENS CAMERA

Hikvision's Monovu Dual Lens Camera, with its compact footprint and recessed mount, creates a more comfortable guest experience wherever it's installed. With its double-lens design and picture-in-picture (PIP) support, one Monovu Dual Lens Camera can monitor in two directions, offering a complete view of tricky corner areas just in one image. An efficient and cost effective solution for banking tellers, VIP counters for insurance companies, long hallways in hotels and office buildings, and other complex areas.



Bank counters



Hotel hallway junctions



Long corridors



VIP counters at financial institutions

## Key Features

- High, 1280 x 960 resolution for each lens
- 120 dB WDR for each lens
- Independent lens adjustment
- PIP support
- Built-in Wi-Fi (optional)[-W model]

## Available Models

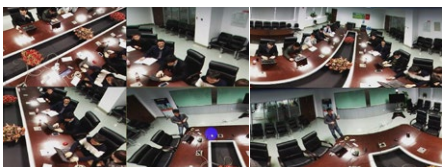
DS-2CD6812D

## MONOVU



# LARGE INDOOR AREA SECURITY PANORAMIC CAMERAS

Hikvision Panoramic Cameras single-handedly capture images from every corner of a particular location while eliminating blind spots. They make a great choice for detailed coverage of large, unobstructed indoor areas commonly found in hotel lobbies, airports, shopping malls, parking lots, retail stores, offices, restaurants, classrooms, and the like.



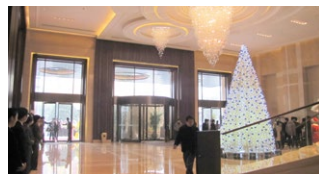
Horizontal panoramic view



Original fisheye view



Supermarket



Lobby



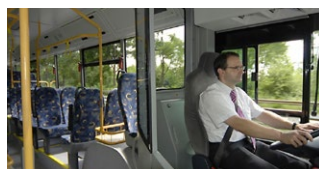
Shopping malls



Warehouses



Parking lot



Mobile



## Key Features

- High resolution images – up to 3072 x 2048
- 360-Degree panoramic or multiple, de-warped view
- IR range of up to 50 feet (15m)
- Audio / alarm I/O
- On-board storage

## Available Models

- DS-2CD63C2F-I
- DS-2CD6362F-I
- DS-2CD6332FWD-I

# LARGE OUTDOOR AREA SECURITY MULTI-IMAGER PANORAMIC DOME CAMERAS



Hikvision's multi-imagers camera series is equipped with four or eight fixed imagers to provide a 180-degree or 360-degree panoramic horizontal view, one HD PTZ camera can provide high detailed image. These ultra-low-light Darkfighter cameras are able to capture high quality colored images, even in dime light environments. It's a very effective tool for wide-open area monitoring like city surveillance, parking lots, airports, town square, stadiums, gymnasiums, and much more.



Airports



Parking lots



Traffic intersections



Stadiums

## Key Features

- Darkfighter imaging sensors
- On-board stitching for panoramic view
- 8MP or 16MP high resolution
- IP66
- True WDR

## Available Models

- DS-2DP1636-D
- DS-2DP0818Z-D
- DS-2DP1636Z-D
- DS-2CD6986CM-(A)(H)





# PERIMETER PROTECTION THERMAL CAMERAS



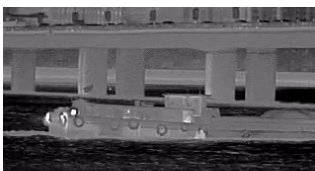
Hikvision's new Thermal Cameras provide multiple options for varying needs – long range detection of people, objects, and incidents – even in extreme, low-light environments.



Fire detection



Person detection



Marine surveillance

## Key Features

- 384 x 288 Resolution
- VOX detector
- Single or dual lens
- 9.5 / 25 / 40 / 75mm lenses
- Fire- and person-detection

## Available Models

- DS-2TD2035/-HZ
- DS-2TD4035D
- DS-2TD2235D
- DS-2TD6034-40
- DS-2TD6035D



# COVERT SECURITY RECESSED-MOUNT IP CAMERAS

Hikvision understands the importance of workplace aesthetics, especially in smaller business environments where surveillance equipment can be more conspicuous. The Hikvision 2E Series Recessed-mount IP Camera features HD resolution, on-board storage, a Wi-Fi connection, ultra-compact design, and a choice in cover colors to blend in with your business environment - making this camera the ideal solution for any small business or office space. This camera model, with its adjustable electrical plug, is easy to install, fits any space, and doesn't require tools.



Full HD 1080P resolution



Easy Installation



On-board storage



Multiple colors



Wi-Fi connectivity



Easy viewing with EZVIZ Cloud P2P

## Key Features

- Full HD resolution
- Easy installation
- On-board storage supports
- Multiple cover color options
- Wi-Fi connectivity

## Available Models

DS-2CD2E10F,  
DS-2CD2E10F-W  
DS-2CD2E20F,  
DS-2CD2E20F-W

\*-W: Wi-Fi optional

# STORE MANAGEMENT HDMI OUTDOOR CAMERAS



A well-placed monitor at a store can deter potential criminals. Hikvision outdoor domes feature HDMI to connect directly with HD monitors, playing a crucial role for deterrent potential criminals.



**DARKFIGHTER**

## Key Features

- Built-in HDMI interface
- Full HD 1080p, up to 60 fps
- Ultra-low-light illumination
- 120 dB WDR
- 2.8-12mm motorized VF lens
- IP66 rating & vandal-proof
- IR up to 120 feet (40m)
- Full Smart-feature set
- Smart auto focus
- (-H) Built-in heater & fan (optional)

## Available Models

DS-2CD4526FWD-IZM(H)

# LONG RANGE SURVEILLANCE 20X BULLET CAMERAS



Employing industry-leading optical design, our bullet camera is equipped with 4.7-94mm telephoto motorized VF lenses with 20x zoom to capture clear video and minute details. Consistent aperture is supported for ultra-low-light performance at all focal ranges.



## Key Features

- Full HD 1080p
- 120 dB WDR
- 4.7-94mm Motorized VF lens
- IP67 rating
- IR up to 490 feet (150m)
- Full Smart-feature set
- Smart auto focus
- (-S) Audio / alarm IO optional
- (-H) Built-in heater optional



## Available Models

DS-2CD4A24FWD-IZ(S)(H)

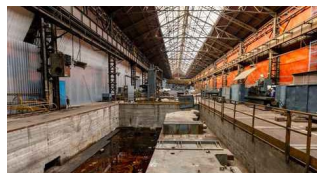
# SPECIALIZED SECTOR SECURITY ANTI-CORROSION CAMERAS



Hikvision's Anti-Corrosion Series Cameras are able to effectively deter acidic and neutral-salt fog corrosion due to its unique design. This series can also capture high-quality colored images in dim environments. An ideal product for port surveillance, our anti-corrosion models can also be used in other corrosive environments such as chemical factories, de-salinization or water plants, etc.



Chemical industries



Water plants



Coastal areas



Docks

## Key Features

- Anti-corrosion Stainless Steel, effectively deters acidic and neutral-salt fog corrosion
- Up to 1920 x 1080p @ 60 fps for real-time HD image output with H.264 high-profile encoding
- Ultra-low-light illumination
- 316L Stainless Steel
- WF2, C5-M, NEMA 4X anti-corrosion standard

**DARKFIGHTER**

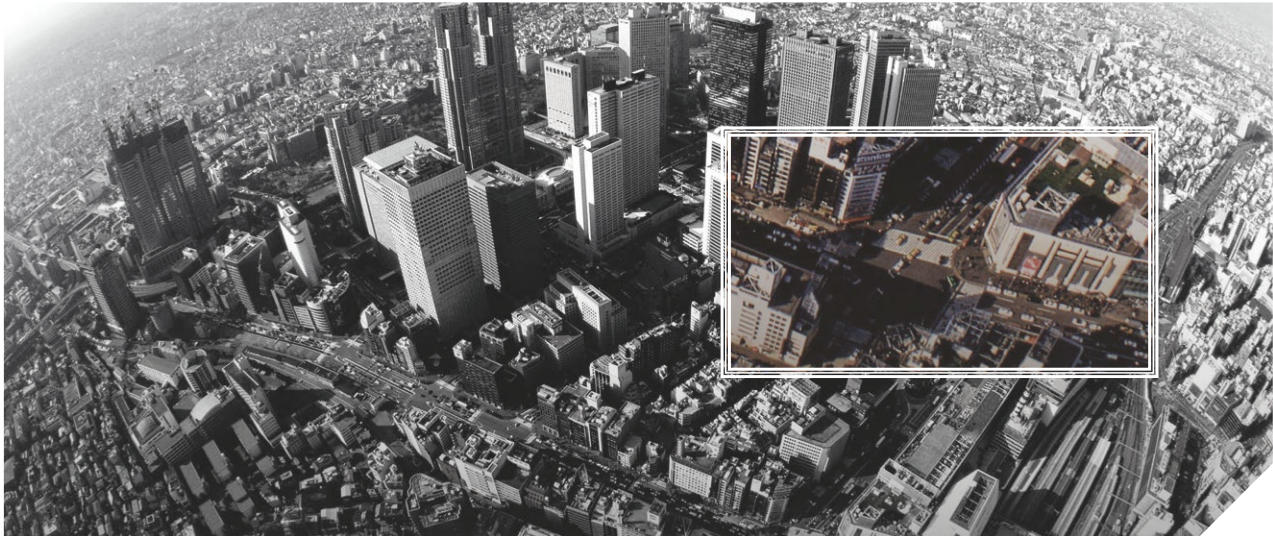


## Available Models

- DS-2DT6223-AELY
- DS-2CD6626DS-IZ(H)
- DS-2CD6626D-IZ(H)
- DS-2CD6626BS-(R)
- DS-2CD6626BE-HIRAIR5

# CRITICAL AREA SECURITY POSITIONING SYSTEM CAMERAS

Hikvision has a full series of 2 MP Positioning System Cameras to be used in critical area monitoring for city surveillance. With IP 66 standard and advanced lighting protection, these cameras can be deployed in all-weather, outdoor environments for high definition monitoring – even in dim environments. Also, Hikvision offers a variety of options for varying purposes – like 36X Laser Ultra-low Illumination IR Positioning System, 32X Laser IR Positioning System, 23X Ultra-Low Illumination IR Positioning System, and 23X Mobile Ultra-low illumination IR Positioning System Lite.



Highway downgrades



Plazas



Railway stations



Airports

## Key Features

- Ultra-low-light illumination
- Wide range of movement
- True day & night, WDR, 3D DNP, and Defogging
- 3D intelligent positioning
- Self-cleaning wipers

---

## Available Models

DS-2CD6986CM-(A)(H)  
DS-2DY9185-AI2  
DS-2DY9187-AI8  
DS-2DY9188-AI2  
DS-2DY9188-AIA  
DS-2DY5223IW-AE  
DS-2DY5223IW-DM



# SMART MOBILE TRANSPORTATION SOLUTION PRODUCTS

Maintaining safe public and community transportation resources concerns public officials worldwide. From effective traffic accident response systems to guarding against potential threats – whether local, national, or international – vehicular security remains critical, more now than ever before. In addition, more complex transportation hubs with increased passenger loads call for central management systems that can truly safeguard citizens against unlawful activities. Hikvision provides a complete mobile surveillance solution including both IP Cameras and HD-TVI analog video transmission for varying needs.



## Mobile Network Products



### Key Features

- 1, 2, and 6 MP (max.) resolution products for varying requirements
- Internal and external cameras for complete security
- IR up to 90 feet (30m)
- NVRs with 4- or 8-channel access for any scenario
- HDD hot-swapping device with vibration dampening technology ensure NVR data safety
- Pluggable 3G / 4G models
- EN 50155 Certification



### Available Models

#### Inner-vehicle camera:

- DS-2CD6510/6520DT-I(O)
- DS-2CD6510D-I
- DS-2CD6520D-I
- DS-2CD6562PT(6MP fisheye camera)

#### Outer-vehicle camera:

- DS-2CD6510-I (O)
- DS-2CD6520ET-I (O)

#### NVR:

- DS-M5504HNI
- DS-M7508HNI

## ● HDTVI Products



### Key Features

- HD 720p resolution
- IR range up to 60 feet (20m)
- IP68 rated
- Pluggable 3G / 4G / Wi-Fi modules (optional)

### Available Models

*Mobile HDTVI Cameras*  
 DS-2CS58C0T-IT (S)  
 DS-2CS58C0T-ITR

*Mobile DVR*  
 DS-MP7504HMI

## ● Portable Video Recorder(PVR)



Multifunctional, waterproof, dust-proof, and drop-proof



GPS, 3G, Wi-Fi



High-resolution camera and extensive range of accessories

### Key Features

- 3.5" LCD touchscreen
- Up to 1080p video recording
- Up to 13 MP built-in HD camera
- Fingerprint ID
- IP66 rated protection

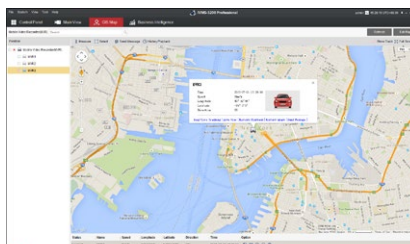
### Available Models

DS-6102HLI-T (6W/GLE)

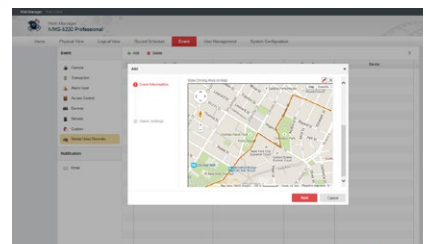
## ● Solution Highlights



Real-time monitoring



GIS monitoring and tracking



Anomaly alarms



Traffic accidents



Video Push



Central management platform

# SMART TRAFFIC SOLUTION PRODUCTS



Hikvision provides complete, innovative solutions for traffic sectors, especially for check points and highway road monitoring. Hikvision Traffic Cameras at checkpoints not only deliver high-quality images, they also use smart traffic monitoring to offer speed data, forensic snapshots, and vehicle information analytics. The powerful combination of Hikvision's intelligent traffic network cameras, speed-checking radar, and LED strobe lamps provides a robust surveillance tool for any situation — day or night.



Checkpoints



Highways



City traffic



Traffic intersections

## Key Features

- High-resolution CCD traffic cameras accurately capture images of speeding vehicles
- Built-in vehicle license plate recognition
- Narrow-wave speed radar precisely detects speeding vehicles
- Various LED or strobe lights ensure clear images in low-light conditions

## Available Models

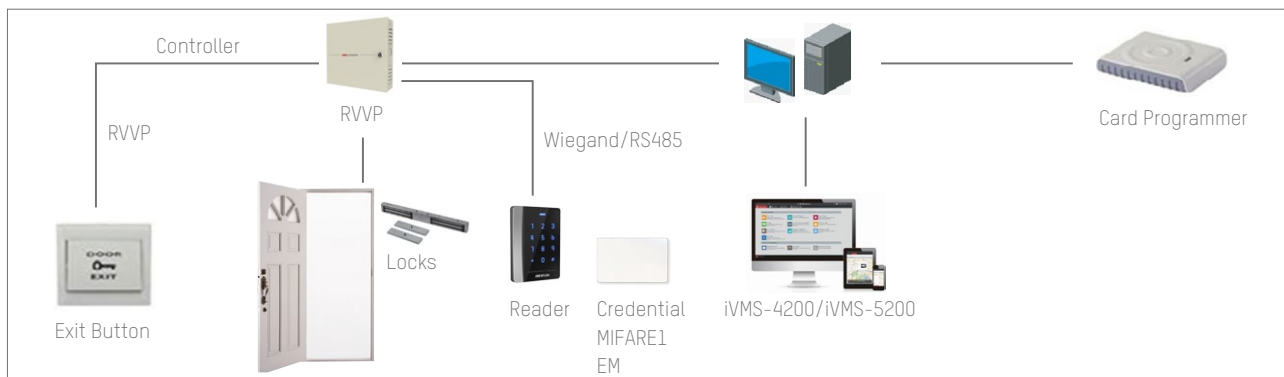
- Intelligent Traffic Network Camera VCU-7012-ITIR (Speed Inspection Radar)
- CSR-IN (LED Strobe Lamp)
- DS-TL2000A-L1 (Road Monitoring Capture Unit)





# ACCESS CONTROL

Whether people are coming in or going out, establish complete control with Hikvision's Access Control system. We provide features like tamper-proof credential systems, MIFARE and contactless card readers, and multiple-input access modes for secure identity confirmation. Various communication interfaces and protocols are available as well, including TCP/IP network interface and Wi-Fi standalone terminals, and customers' accounts always remain safe via RSA and AES encryptions.



## DS-K2604

### Four-Door Access Controller

- Readers: 4 Wiegand readers & 8 RS-485 readers
- Entry Mode: Single-door, one direction; single-door, bi-directional
- Input Interface: 4 alarm inputs, 4 gate magnetic switches, 8 buttons, 4 case inputs, 1 anti-dismantle feature
- Output Interface: 4 open door relays & alarm relays
- Supports 100,000 card holders and 300,000 transactions



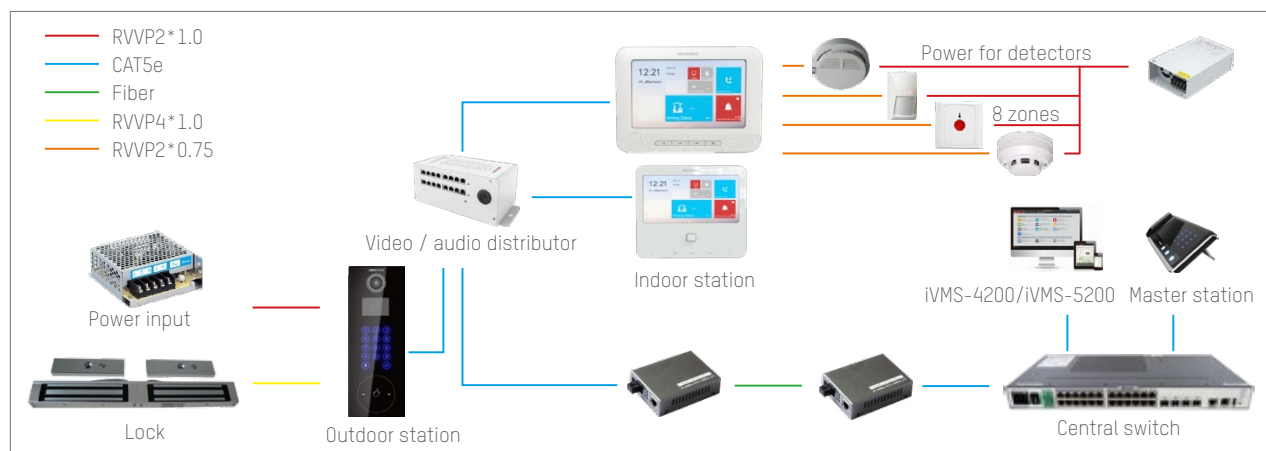
## DS-K1101M/MK, DS-K1102M/MK, DS-K1104M/MK

### Card Readers

- Supports Mifare 1 cards
- Keypad (DS-K1101MK) included
- Communication Interface: RS-485 and Wiegand output, anti-dismantle
- Suitable for 120-type, surface-mounted box

# VIDEO INTERCOM

Based on IP system architecture, Hikvision's video intercom system provides robust features and great extendibility. Our video intercom products integrate video surveillance, alarm systems, and access control systems, providing an all-around safe environment for your workplace and daily operations.



## DS-KV81/2/402-IM

### Metal Villa Door Station

- Camera resolution: HD720P, 25 fps(P)/ 30 fps(N)
- 10M/100M Self-adaptive Ethernet
- 4-Channel alarm input, 1-channel alarm output
- IP65 and IR Supplement
- 1/2/4-Channel indoor station access



## DS-KH8300/DS-KH8301-WT

### Indoor Station

- Colorful 7" TFT LCD display; Resolution: 1024 x 600
- 10/100 Mbps Self-adaptive Ethernet
- Camera Resolution: 640 x 480, Mechanical Switch, Wi-Fi 802.11b/g/n; supports SD cards (DS-KH8301-WT)
- 8-Channel alarm input
- Power over Ethernet; 12V DC



## DS-KD8002-VM

### Metal Door Station

- 3.5" Colorful TFT LCD display; Resolution: 480 x 320
- 10/100/1000 Mbps self-adaptive Ethernet
- Camera Resolution: HD 720p, 25 fps(P)/ 30 fps(N)
- 8-Channel alarm input, 4-channel alarm output
- Visible light supplement

# Recording Devices

4 HDD NVR

16/24 HDD  
NVR

## 01 NVRs

3G/4G  
NVR

ATM NVR

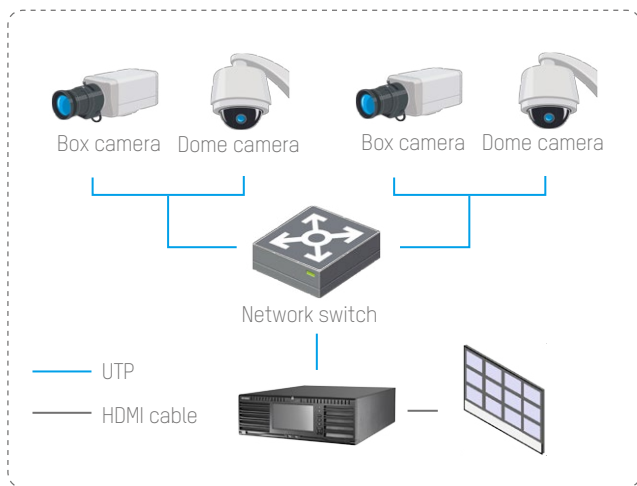


 Due to limitations of product authentication and language support, Hikvision's full line of products will not be available in some areas of the world. For details, please contact a Hikvision branch office or one of our authorized distributors.

# SUPER NVR

## 16/24 HDD NVR

Hikvision's Super Embedded NVR is specifically designed for large-scale surveillance. This system features super-high throughput to accommodate more than 120 channels of 5 Mbps video inputs, massive storage with up to 24 built-in HDD interfaces and external storage devices, and excellent system stability with redundancy. Working in concert with Hikvision video management software and Smart IP cameras, this NVR is a robust surveillance tool suited for a variety of vertical applications.



### Key Features

- Records at up to 8 MP resolution
- Simultaneous HDMI output (up to 12 channels) and VGA output (1 channel) at up to 1920 x 1080p and an LCD touchscreen
- Up to 128 or 256 IP cameras can be connected with 400 Mbps or 640 Mbps incoming bandwidth
- Supports redundant power supply to improve system stability
- Supports HDD hot-swapping with RAID 0, 1, 5, 10 storage
- "-H" models support joining and roaming for video wall displays

### Applications

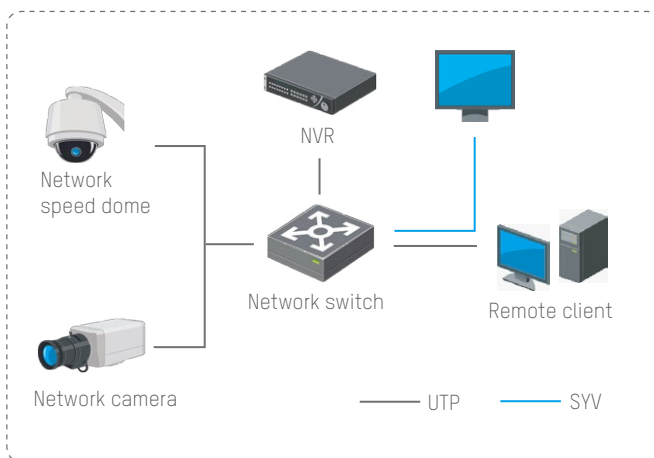
City surveillance, stadiums, airports, much more

### Available Models

DS-96128NI-F16, DS-96256NI-F16,  
 DS-96128NI-F16/H, DS-96256NI-F16/H  
 DS-96128NI-F24, DS-96256NI-F24,  
 DS-96128NI-F24/H, DS-96256NI-F24/H  
 DS-9632NI-ST, DS-964NI-ST

# PLUG & PLAY POE NVR 4 HDD NVR

The DS-7700 Series NVR features 8 PoE network interfaces – simultaneously providing data and power connections over one cable for easy “plug & play” installation and configuration. When combined with Hikvision’s 2-line IP cameras, these NVRs offer easy IP solutions for small and mid-sized businesses.



## Applications

Retail, office, education

## Key Features

- Records at up to 5 MP resolution
- HDMI and VGA output at up to 1920 x 1080p
- Plug & play with 16 independent PoE network interfaces
- 4 SATA HDD interfaces up to 6 TB each
- HDD quota and group management

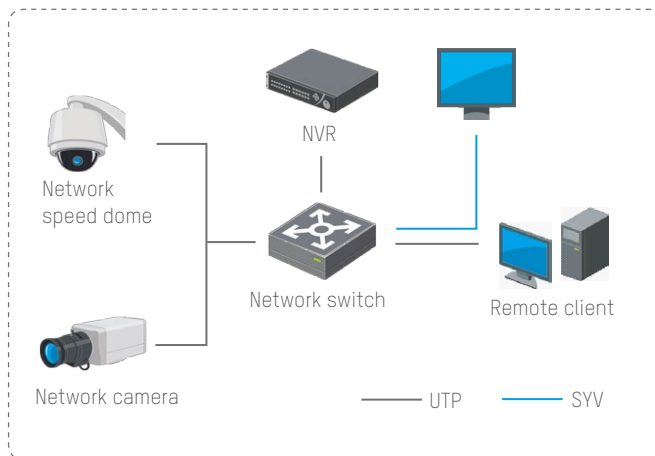
## Available Models

DS-7716NI-ST, DS-7732NI-ST,  
DS-7716NI-SP, DS-7732NI-SP  
DS-7716NI-E4, DS-7732NI-E4,  
DS-7716NI-E4/16P, DS-7732NI-E4/16P;

# ATM SECURITY

## ATM NVR

With a footprint specifically designed for ATM machine areas and compatible with most well-known ATM POS protocols, the Hikvision DS-7600NI-V Series system is the ideal model for ATM solutions.



### Key Features

- Records at up to 5 MP resolution
- HDMI and VGA output at up to 1920 x 1080p resolution
- HDD quota and group management
- 4 Independent PoE network interfaces (Only DS-7604 / 7608 / 7616NI-VP)
- Vertical design for easy HDD installation
- HDD hot-swapping supported

### Applications

ATM Machines and Surrounding Areas

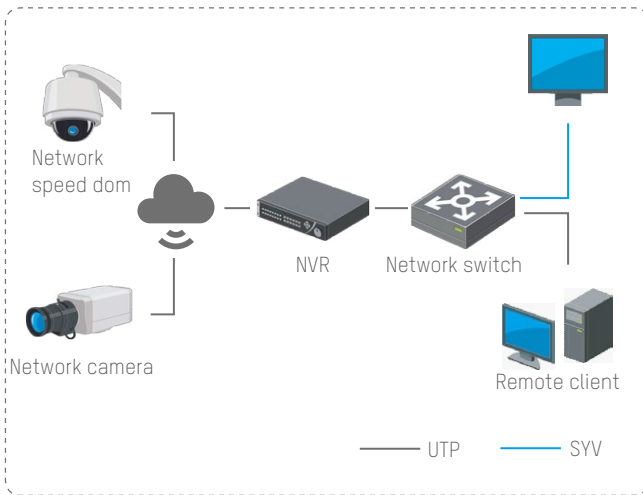
### Available Models

DS-7604NI-V, DS-7608NI-V, DS-7616NI-V  
DS-7604NI-VP, DS-7608NI-VP, DS-7616NI-VP

# WIRELESS NVR

## 3G/4G NVR

Compact form factor and wireless capabilities make our networked NVRs practical for those rather impractical implementations. Small in size and big in functionality, Hikvision's 3G and 4G NVRs are the ideal solution for transportation and outdoor applications, and any other place that is only accessible via wireless connection.



### Key Features

- Records at up to 5 MP resolution
- HDMI and VGA output at up to 1920 x 1080p
- One SATA (DS-7604NI-E1 Series), two SATA (DS-7608/16NI-E2 Series), one USB 3.0
- Built-in 4G or 3G feature supporting wireless connections
- \*-GLF Series supports FDD-LTE 4G networks
- \*-GW Series supports WCDMA UMTS/HSDPA/HSUPA 3G networks


### Available Models

DS-7608NI-E2/GLF, DS-7616NI-E2/GLF  
DS-7608NI-E2/GW, DS-7616NI-E2/GW

# Control Center

Video Cloud Server

04 BIG DATA



LCD/DLP/LED

03 DISPLAY



C10S Series

Blazer Pro All-in-One Server

iVMS-5200 Professional

6400HDI-T Series

01 VIDEO MANAGEMENT SOFTWARE



02 STORAGE



Single controller/Double controller

**i** Due to limitations of product authentication and language support, Hikvision's full line of products will not be available in some areas of the world. For details, please contact a Hikvision branch office or one of our authorized distributors.

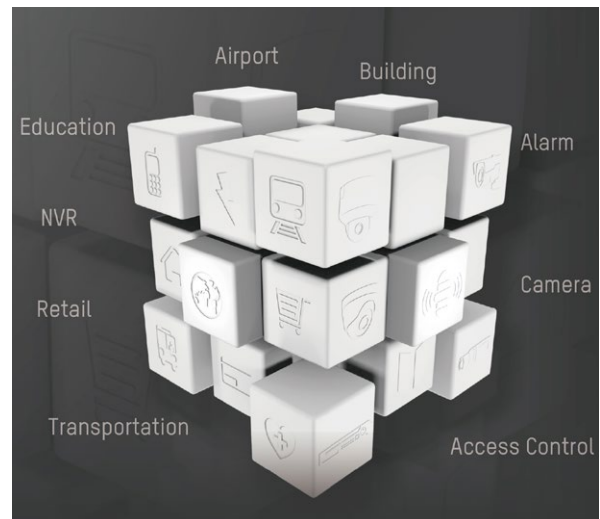


# iVMS-5200 PROFESSIONAL

Hikvision's iVMS-5200 Professional is centralized Video Management Software that allows you to manage all of your business security subsystems on one platform. Managing these subsystems on a single platform helps you to more efficiently track elements such as video surveillance, access control, and parking lot management. Its modular design gives you the flexibility to select components that meet your specific needs.



Access from anywhere – Use your Smartphone, PC, or Internet browser



Business intelligence module to maximize your business intelligence



ANRP for recognition of VIPs and easy access control



GIS for car location display, car monitoring and tracking



CCTV integration with POS for video and transaction overlay

## Key Features

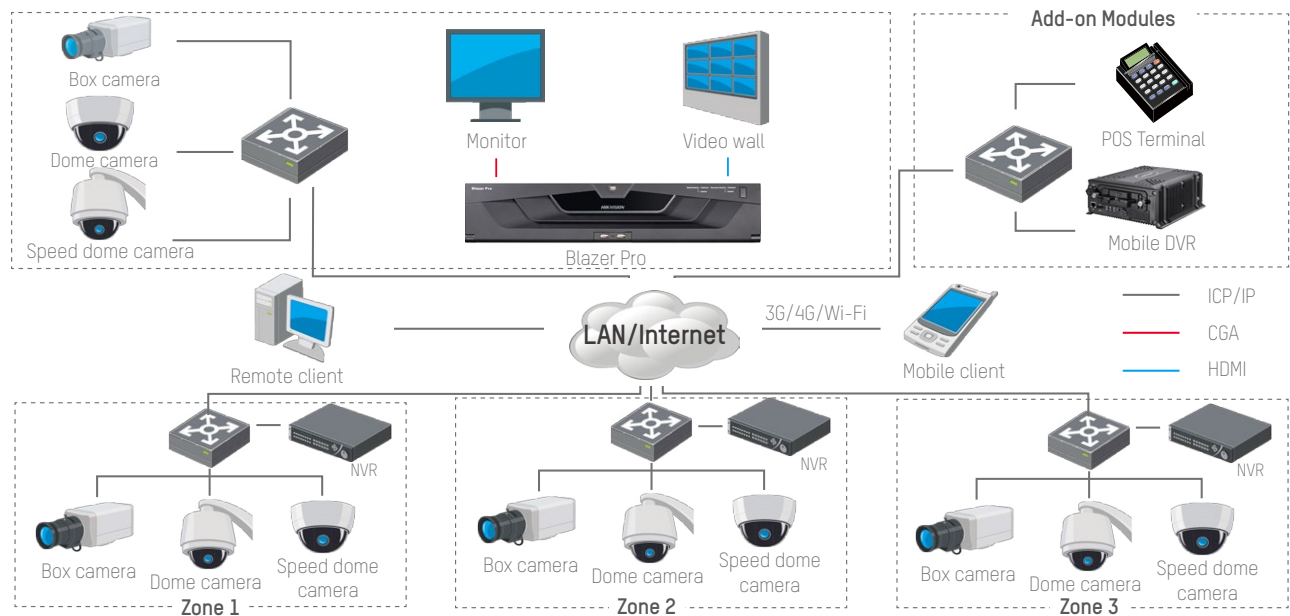
- Centralized equipment and user management
- Supports access control and license plate recognition
- Supports business intelligence and POS integration
- Maximum connected devices per system: 1024
- Control client maximum: 16; Web client maximum: 16; Mobile client maximum: 64
- Supports third-party surveillance integration via ONVIF protocol and SDK

## Available Models

iVMS-5200 Professional

# BLAZER PRO ALL-IN-ONE SERVER

The Blazer Pro is an all-in-one server that combines Hikvision's powerful Video Management System (VMS) with video storage capacity in one device. In addition to providing basic functions like recording, live view, playback, and alarm management, advanced functions such as license plate recognition, POS integration, business intelligence, and GIS mapping are available (as add-ons) to meet your unique requirements.



## Key Features

- Up to 256 accessible and recording channels; recording bandwidth up to 640 Mbps
- Supports 2 x 2 display setup – an economical solution for smaller monitoring areas
- Automatic network recovery technology prevents video data loss when the network connection is interrupted
- HDD hot-swapping with RAID 0, 1, 5, 10, and “hot spares” to ensure data security and reliability
- Automatic discovery and addition of online network cameras
- Three-year hardware warranty
- Three-year warranty for system by SSP

## Available Models

Blazer pro/128, Blazer pro/256

# NETWORK STORAGE

## SINGLE CONTROLLER/DOUBLE CONTROLLER

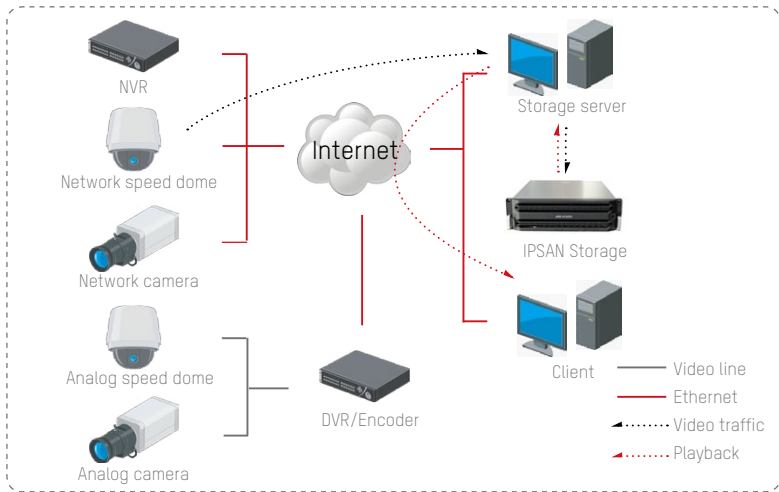
Designed with highly reliable redundancy and the avoidance of single-point failures, Hikvision's network storage products are demonstrably effective in protecting user data. With SAN/CVR application integration, these devices offer cost-effective video surveillance storage.



DS-A82024D/DS-A81024D

### Double controller storage products

- IP-SAN and Central video recording support
- Double controller and redundant power-automatic service takeover when failure occurs
- Disk detection, repair, and RAID optimization
- Low-power design
- Massive storage space: 4U chassis with 24 HDDs and cascading extension support



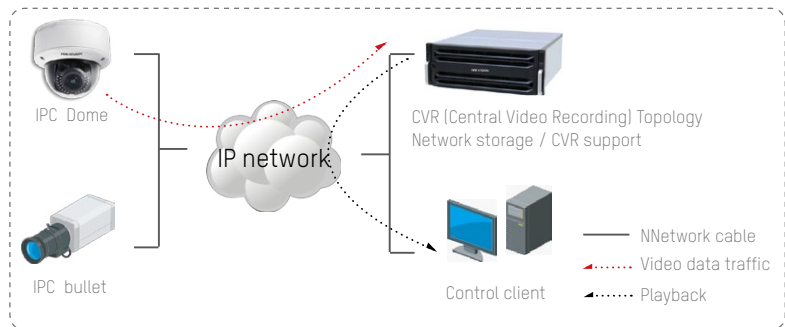
IPSAN Topology



DS-A81016S/DS-A80624S

### Single controller storage products

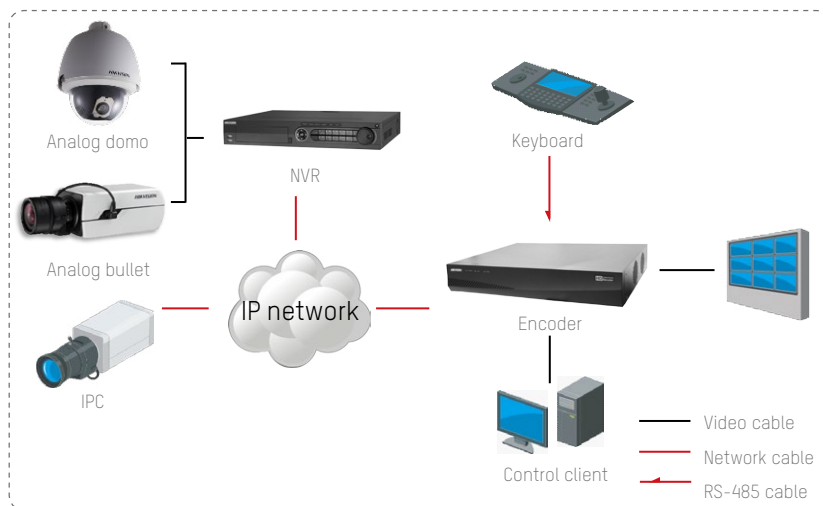
- IP-SAN and Central video recording support
- Up to 16/24 HDDs, with up to 6 TB capacity on each disk and cascading extension support
- RAID 0, 1, 3, 5, 10, 50 and HDD hot-swapping supported
- Modularization and redundant power design for high reliability



CVR (Central Video Recording) Topology

# DECODER 6400HDI-T SERIES

Designed for high-definition video monitoring, the DS-6400HDI-T Series HD Audio / Video Decoder uses a TI Netra processor and Linux operating system to ensure high reliability and system stability.



Decoder Networking Topology



## Available Models

- DS-6404HDI-T
- DS-6408HDI-T
- DS-6410HDI-T
- DS-6412HDI-T
- DS-6416HDI-T

## Key Features

- Decoding capacity: 8 MP at 20 fps; 6 MP at 25 Fps; 5 MP at 25 fps
- Supports up to 12 DVI outputs and up to 8 BNC interfaces
- HDMI / VGA output with the use of DVI-to-HDMI or DVI-to-VGA adapters
- DVI, HDMI, and VGA output at up to 1920 x 1080 resolution
- Decodes video streams in H.264+ / H.264 / MPEG4 / MPEG2 / MJPEG formats
- Decodes audio in G722 / G711A / G711U / G726 formats

# VIDEO-WALL DISPLAY UNIT LCD/DLP/LED

Hikvision Video Wall supports LCD, DLP, and LED light technologies, together with Hikvision's decoders, video wall controllers products. Now Hikvision provides customers a total video surveillance display solution. Due to its industry-leading technologies and professional services, Hikvision display solution is suitable for verticals such as city surveillance, transportation, finance, energy, and manufacturing.

## Available Models

### LCD:

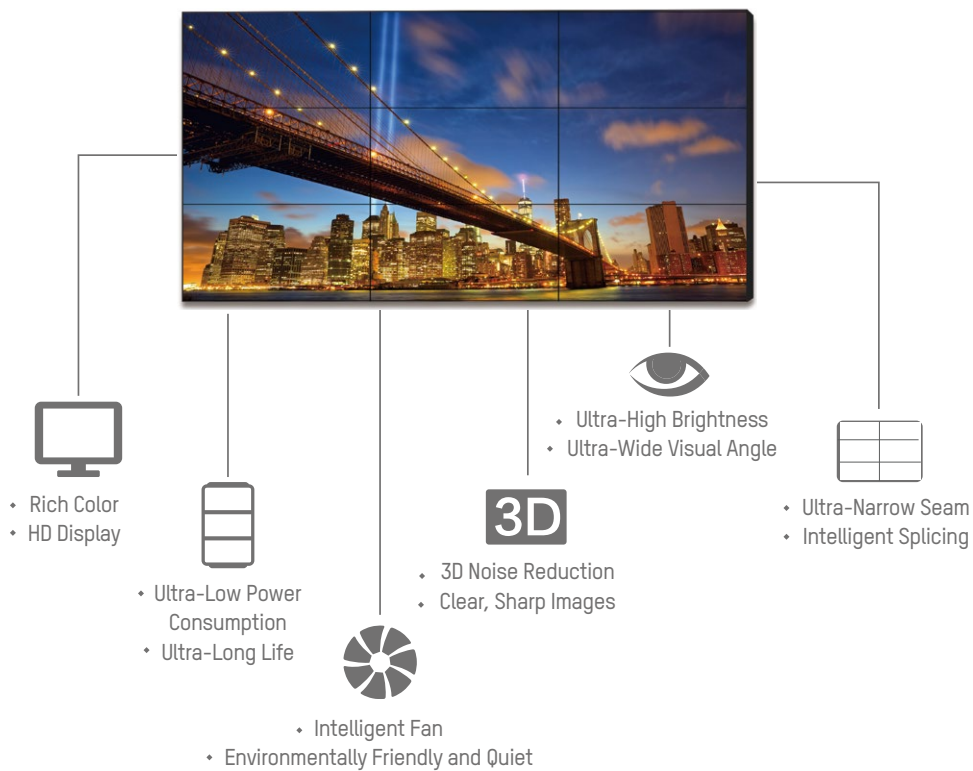
DS-2046NL-B, DS-2046NH-B, DS-2046NL-C,  
DS-2046NH-C, DS-2055NL-B, DS-2055NH-B

### DLP:

DS-D1050EH, DS-D1060EH, DS-D1067EH, DS-D1080EH, DS-D1070EF

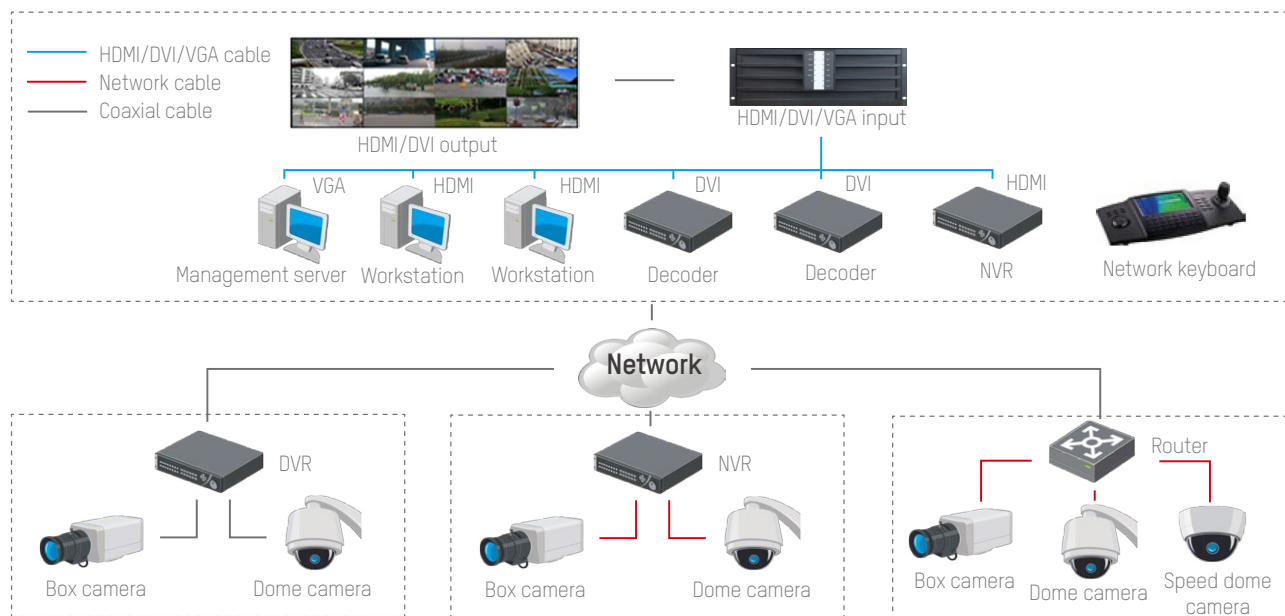
### LED:

DS-D4012FI-EL, DS-D4014FI-GL, DS-D4018FI



# VIDEO-WALL CONTROLLER C10S SERIES

Designed with the newest system architecture, data switching and processing methods, Hikvision's DS-C10S Video Wall Controller is a high-performance image processing device that integrates the processing of multiple types of video streams and network data. As the central display control device, it is mainly used for dynamic video-wall systems using multiple units simultaneously, and accommodates up to 72 joining screens.



## Key Features

- A signal source can be displayed on the MxN (M≥1, N≥1, MxN ≤72) display units
- Up to 8 kinds of signal sources are supported, including VGA, DVI, HDMI, BNC, SDI, YpbPr, Ultra HD, and IP camera inputs
- Supports 4, 9, & 16 multi-screen layouts
- Up to 6 image layers can be displayed on one screen, including one virtual LED image layer and a background layer
- Supports cross-window video roaming

## Available Models

DS-C10S-S11/E, DS-C10S-S22/E, DS-C10S-S41/E

# VIDEO CLOUD SERVER

The Hikvision Video Cloud Server is a powerful tool for intelligent video decoding, analysis, and data retrieval from analog cameras. Our cloud server also supports face recognition, license plate recognition, and behavior analysis, offering a complete intelligent solution for traditional analog systems in city surveillance.



Search picture based on database



Virtual bayonet for the extraction of cars



Extraction of more information from traditional bayonet camera

## Key Features

- Supports extraction of video data from traditional cameras for analysis of moving objects such as vehicles and people
- Supports secondary structuring of pictures to get more information such as license plate numbers, colors and brands of vehicles, human physical attributes, etc.
- Supports behavior analysis such as entry/exit, traversing, fast moving objects, etc.
- Advanced search of car front characteristics within database

# Transmission


IP Optical Transceiver

HD-TVI Optical Fiber Transceiver

POE Switch

Industrial Grade Ethernet Switch

## 01 TRANSMISSION

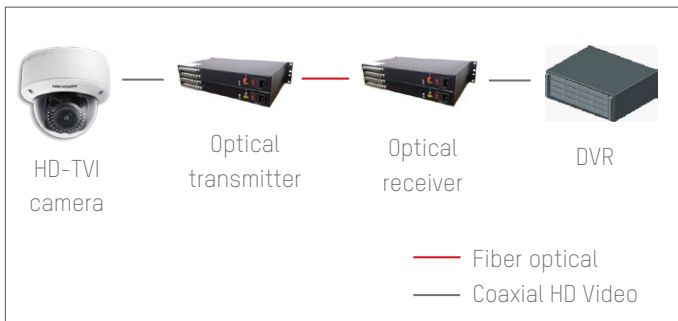


**i** Due to limitations of product authentication and language support, Hikvision's full line of products will not be available in some areas of the world. For details, please contact a Hikvision branch office or one of our authorized distributors.



# HDTVI OPTICAL FIBER TRANSCEIVER

Hikvision's HDTVI Fiber Optic Transceiver is specially designed for long-distance transmissions of HDTVI composite video. It uses non-compression digital photovoltaic transmitting technology to transmit HD videos point-to-point via optical fibers. It is widely used for installations involving HDTVI cameras.



## Key Features

- Up to Coaxial
- Lossless real-time transmission
- Auto-identifies video input format
- Two bi-directional, half-duplex RS485 transmissions
- Plug & play with no circuit or optical adjustment requirements
- LED indicator displays optical transceiver type
- Various video formats supported, including 720p/25, 720p/30, 720p/50, 720p/60

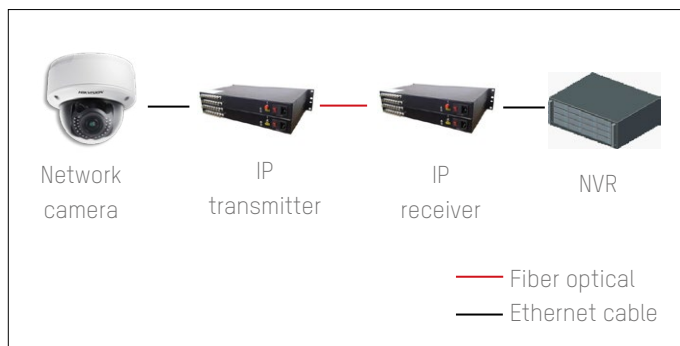
## Available Models

DS-3V01T-A/720P/1080P  
DS-3V01R-A/720P/1080P  
DS-3V01R-AU/720P/1080P  
DS-3V02T-A/720P/1080P  
DS-3V02R-A/720P/1080P  
DS-3V02R-AU/720P/1080P  
DS-3V04T-A/720P/1080P  
DS-3V04R-A/720P/1080P  
DS-3V04R-AU/720P/1080P



# IP OPTICAL TRANSCEIVER

Hikvision's IP Fiber Optic Transceiver uses time division and wavelength division multiplexing technology to transmit signals via Ethernet in single-fiber and single modes. With a transmission distance of up to 65 feet / 130 feet (20 km / 40 km), the transceiver can fulfill a variety of video surveillance applications, including city, facility, transportation, and more.



## Key Features

- One 100BASE-FX Ethernet optic interface (FC and SC selectable)
- Single-fiber and single modes with transmission distance of up to 65 feet (20 km)
- Quality-of-Service support
- Fully operational at temperatures from -22°F to 158°F (-30°C to 70°C)
- Convenient, plug-and-play installation

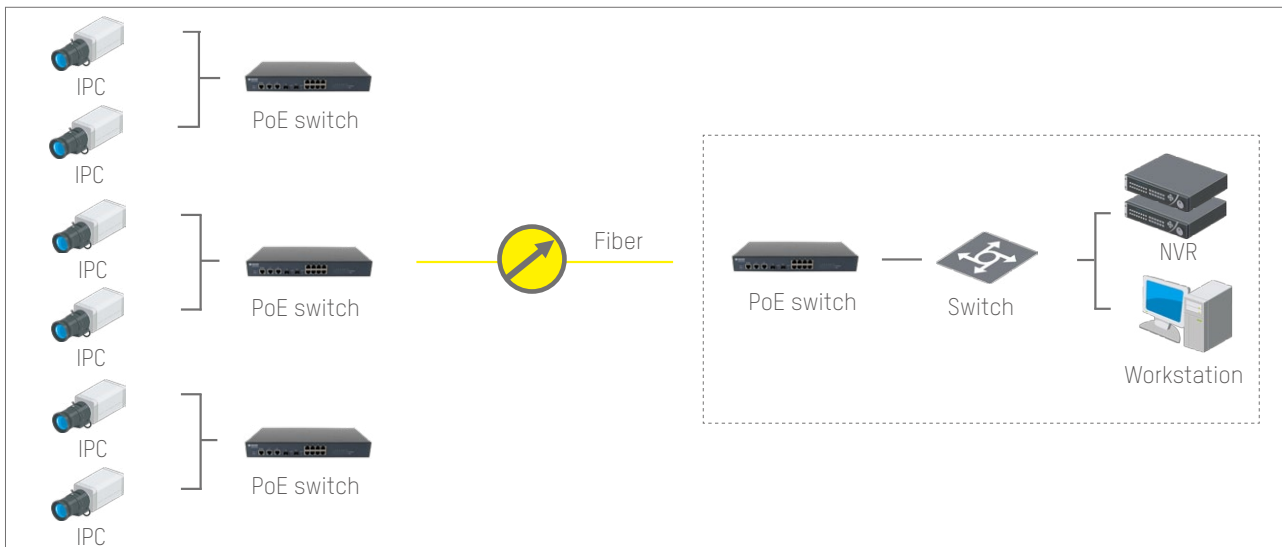
## Available Models

- DS-3D01T-A, DS-3D01R-A
- DS-3D01R-AU, DS-3D02T-A
- DS-3D04T-A, DS-3D08T-A
- DS-3D201T-A, DS-3D201R-A
- DS-3D201R-AU, DS-3D204T-A
- DS-3D208T-A



# POE SWITCH

Power-over-Ethernet (PoE) Switches are helpful tools in the deployment of video surveillance systems. Available in a variety of models from Hikvision, these switches can automatically distribute power according to each port's load characteristics - best suited for video surveillance applications and other environments where installing power cables is prohibitively difficult.



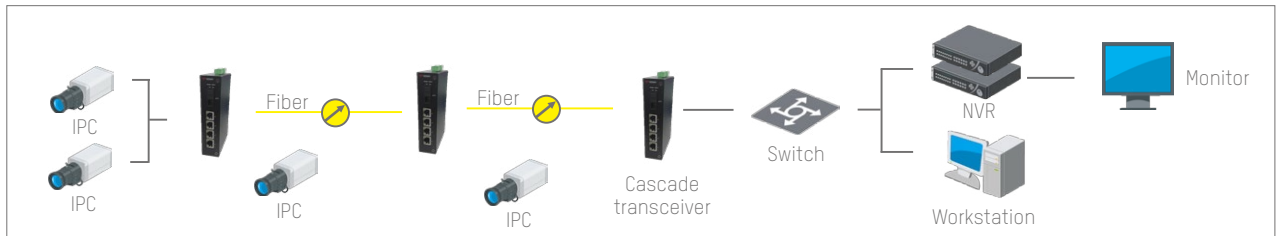
**Available Models**  
DS-3D2208P, DS-3D2228P

## Key Features

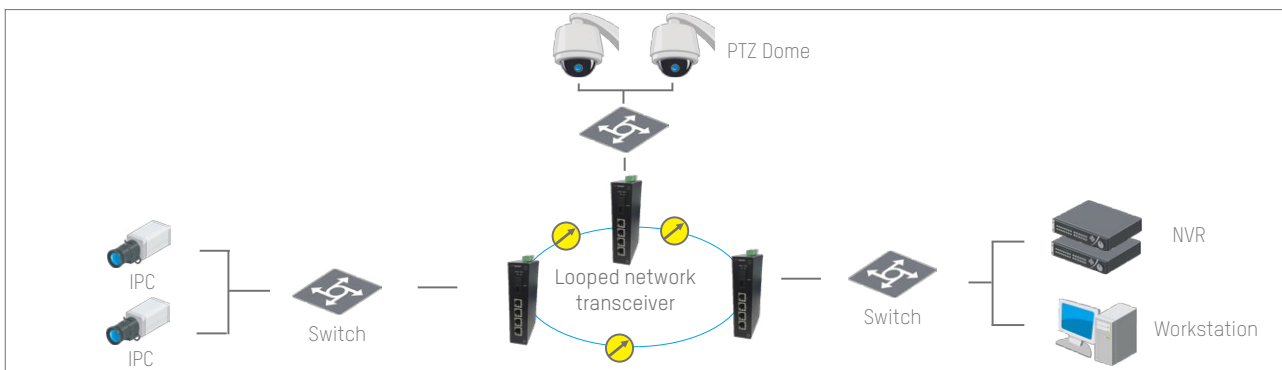
- 64 Gbps backplane capacity, non-blocking design, and video stream forwarding at full speed
- Gigabit optical-fiber transmission with a distance of up to 75 miles (120 km)
- High-security and high-reliability design, 802.1x authentication support, Address Resolution Protocol (ARP) invasion detection
- Powerful flow and broadcast management
- Multiple management modes such as console port, Telnet, Web, and SNMP
- IP multicast and Quality-of-Service support

# INDUSTRIAL GRADE ETHERNET SWITCHES

The latest Industrial Grade Ethernet Switches from Hikvision support long-distance signal transmission via Ethernet for both single-mode fibers and single fibers in harsh environments. To meet varying network requirements, Hikvision offers switches that support cascade or single-loop control. These switches are highly suitable for video surveillance systems in applications like public security, transportation, mining, factories, and other challenging environments.



Cascaded mode



Looped mode



## Available Models

DS-3D14F-A, DS-3D214F-A

## Key Features

- Single fiber and single-mode fiber with a transmission distance of 12 miles (20 km)
- Supports IEEE 802.3, IEEE 802.3u, and IEEE 802.3x network standards
- Broadcast storm prevention
- Time of date exchange delay is less than 5µs
- Quality-of-Service support
- Operating temperatures: -22°F to 158°F (-30°C to 70°C)
- Industrial-grade design and durability



