



# AN EASY VMS STATION

BLAZER EXPRESS

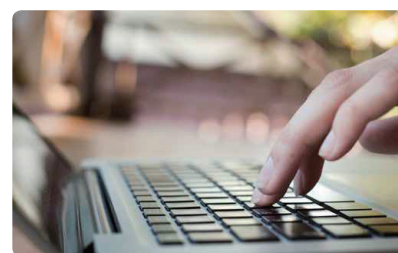
## Blazer Express/16/32

Blazer Express is an intelligent video management software station that comes preinstalled with an operating system and outstanding iVMS, and can support up to 16 or 32 network cameras. With flexible features and included storage space, Blazer Express offers you an efficient and easy one-stop solution for video surveillance implementation, for applications from a small retail store to a complex surveillance installation with multiple sites.



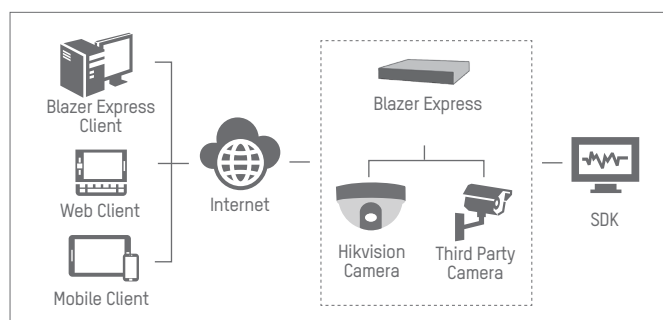
### Easy-To-Use and Highly Efficient

- Preinstalled operating system and pre-activated iVMS for easy installation
- Automatic device discovery for easy device addition
- Setup Wizard for basic settings
- Pluggable mSATA design for convenient OS / iVMS maintenance
- Supports GPU hardware decoding to save CPU resources
- Multiple video search options (tag, lock, interval, and segment) help you find relevant video clips easily



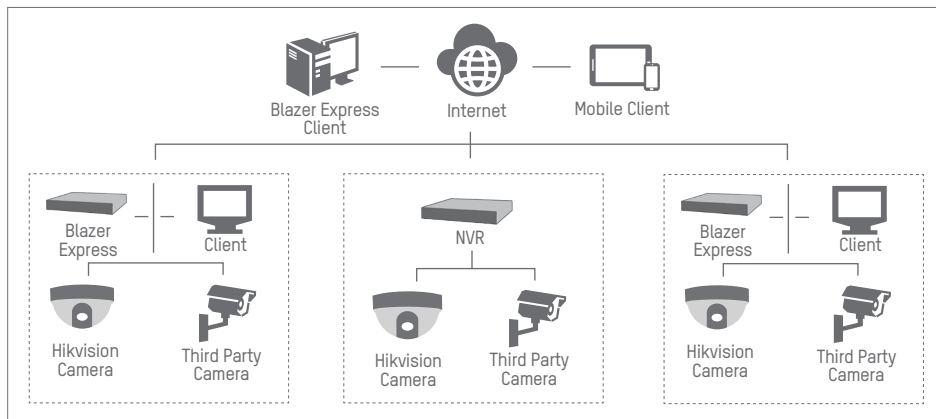
### Flexible and Scalable

- Connect multiple Blazer Express stations at remote sites with Blazer Express Client through cascading mode for centralized management
- Access Blazer Express via multiple free clients anytime and from anywhere
- Compatible with third-party cameras via ONVIF™ or private protocols
- Provides SDK for third-party system integration



## Easy Management

- Unified management of both Blazer Express and DVR/NVR via Blazer Express Client
- ANPR available for convenient entrance/exit management
- Gather alarm information, alarm location, and alarm-linked video using the alarm center for centralized management and faster response
- Get a complete visual overview of your camera locations and the related live videos with E-map, and play back videos and alarms directly on the map to quickly identify event details
- System Health-Check function helps you monitor service, storage, and camera running status, and provides assurance of system maintenance



Feature	Blazer Express/16	Blazer Express/32
Number of Connected Cameras per System	16	32
Maximum number of ANPR cameras	2 in 16	2 in 32
Number of Users	32	
Maximum number of connected clients	5	
Maximum number of cascading stations	up to 5	
C/S Client Support (local & remote)	Yes	
Web Client Support	Yes	
Mobile Client Support	Yes	
Stream Media Servers Support	Yes	
Third-party Cameras Support	Yes	
Alarm Management Support	Yes	
E-map Support	Yes	
Two-Way Audio Support	Yes	
Broadcast Support	Yes	
PTZ Control Support	Yes	
Fisheye Expansion Support	Yes	
People Counting Report Support	Yes	
Operating System	Windows Embedded System 7	
Storage	2 HDDs connectable, up to 12 TB	4 HDDs connectable, up to 24 TB
Memory	4 GB	
mSATA Support	Yes	
Video output	1 HDMI output, 1 VGA output	
Network interface	2; 10M/100M/1000M self-adaptive	
USB ports	4 x USB 2.0, 1 x USB 3.0	
Alarm in / out	4/2	
Audio in / out	1/1	
Working Temperature	0° C to +40° C (32° F to 104° F)	
Working Humidity	10% to 90%	
Chassis	19" 1U	19" 1.5U
Dimensions (W x D x H)	440 mm x 350 mm x 44.5 mm	440 mm x 400 mm x 66 mm